

# **Bentley**

## Collection 2024





# Contents

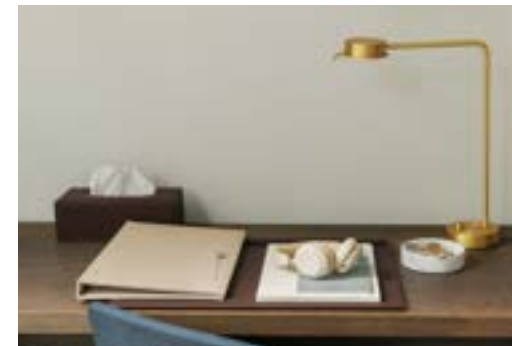
|                                 |    |                            |    |
|---------------------------------|----|----------------------------|----|
| <b>We are Bentley Europe</b>    | 5  | <b>Bathroom</b>            | 56 |
| <b>Bentley Milestones</b>       | 6  | – Bathroom accessories     | 58 |
| <b>Global environment</b>       | 8  | – Scales                   | 62 |
| <b>Customised</b>               | 10 | – Hair dryers              | 64 |
| <b>Wardrobe</b>                 | 12 | <b>Desk</b>                | 66 |
| – Ironing solutions             | 14 | – Accessories              | 68 |
| – Ironing boards                | 16 | – Waste bins               | 70 |
| – Irons                         | 20 | <b>Collections</b>         | 72 |
| – Specifications ironing boards | 23 | – Natural collection       | 74 |
| – Luggage racks                 | 24 | – New Classic collection   | 76 |
| – Accessories                   | 26 | – Nouveau Black collection | 78 |
| – Clothes hangers               | 30 | – Mix & Match collection   | 80 |
| <b>Bedroom</b>                  | 32 |                            |    |
| – Rollaway beds                 | 34 |                            |    |
| – Audio clocks & chargers       | 36 |                            |    |
| – Baby cribs                    | 37 |                            |    |
| <b>Living</b>                   | 38 |                            |    |
| – Kettles                       | 40 |                            |    |
| – Welcome trays                 | 43 |                            |    |
| – Specifications welcome trays  | 46 |                            |    |
| – Accessories                   | 50 |                            |    |
| – Tissue boxes                  | 54 |                            |    |

we think of ——— everything

CONNECTING

## We are Bentley Europe...

We are Bentley Europe, a supplier of innovative, sustainable and high-quality functional in-room products for the hotel industry. With 35 years of experience, we understand that every user-friendly and surprising detail we incorporate can make a world of difference. We are respected for our thoughtful service and our commitment to staying one step ahead. Through our honest and accommodating approach, we aim to connect with the hearts and minds of our clients and their guests.



# Bentley Milestones

|      |  |      |  |
|------|--|------|--|
| 1974 | ESTABLISHED AS A TRADING COMPANY FOR WOODEN FURNITURE    | 2021 | LAUNCH OF A COMPLETE NEW LEATHERETTE DESIGN COLLECTION               |
| 1985 | START IN THE HOTEL INDUSTRY BY PRODUCING TROUSER PRESSES | 2021 | PLANTED 300 TREES FOR THE PROJECT 'TREES FOR ALL'                    |
| 2000 | START PRODUCTION IRONING CENTRES AND MORE HOTEL PRODUCTS | 2022 | INTRODUCTION OF ECO FRIENDLY PACKAGING LINE                          |
| 2008 | WORLD'S FIRST WOODEN WELCOME TRAY                        | 2022 | PARTNERSHIP WITH RONALD MCDONALD HOUSE CHARITIES THE NETHERLANDS     |
| 2010 | WORLD'S FIRST 0,5 L KETTLE FOR THE HOTEL INDUSTRY        | 2022 | PLANTED 1000 TREES FOR THE PROJECT 'TREES FOR ALL'                   |
| 2013 | WORLD'S FIRST HOTEL HAIR DRYER WITH RETRACTABLE CORD     | 2023 | LAUNCH OF OUR BENTLEY BATHROOM COLLECTION                            |
| 2017 | WORLD'S FIRST BATTERY-FREE DIGITAL HOTEL SCALE           | 2023 | EXTENSION OF OUR LEATHERETTE COLLECTION WITH NEW DESIGNS & NEW COLOR |
| 2018 | BENTLEY LAUNCHED ITS ECONOMICAL BRAND MOOR               | 2023 | PLANTED 1250 TREES FOR THE PROJECT 'TREES FOR ALL'                   |



120  
COUNTRIES



2.900  
CUSTOMERS

3  
YEARS OF WARRANTY ON ALL BENTLEY PRODUCTS

170  
IN HOUSE DESIGNED PRODUCTS

25  
WOODEN PRODUCTS, ALL WITH FSC CERTIFICATION

215  
ITEMS ON STOCK



1.200  
PALLET'S AVERAGE ON STOCK

## CORPORATE SOCIAL RESPONSIBILITY

One of the main challenges of our era is finding the right balance between people's well-being and the vitality of our planet.

We believe that every enterprise has a responsibility to address this challenge in a conscientious manner. Our goal is to achieve economic success while considering the impact of our actions on both people and the planet.

We aim to work with sustainable materials in the development of our products and minimizing the use of harmful packaging. Throughout our supply chain, we take steps to reduce our environmental footprint, such as sourcing materials closer to home. In our business operations, we strive to minimize our environmental impact and, when necessary, offset the footprint we leave behind.

On top of our day-to-day business decisions we are proud partners of Trees for All and Ronald McDonald House Charities and support them 100% for what they stand for and what they have achieved





WHAT WE OFFER

CUSTOMISED

In addition to our extensive range, we offer the option to customize our items to meet your specific needs. Thanks to our design team and close collaboration with manufacturers, we provide bespoke solutions that perfectly integrate with the design of any hotel room. We enjoy challenges, so if you have a specific idea or requirement, please don't hesitate to contact us, and we'll demonstrate our commitment to constantly surprising you.

Four steps  
to your  
customised  
product

We offer an endless array of bespoke solutions. Our wooden welcome trays can be ordered in any color you desire, and our leatherette collection can be fully customised in terms of size, shape, and color. We can even supply metal luggage racks in a variety of sizes and finishes, including champagne, silver, and bronze. You can start customizing your items with just a minimum order of 50 pieces. Customization has never been this easy; simply follow the steps below:

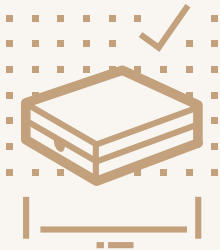
1

Share your design  
& specifications  
with us



2

You will receive  
a technical drawing  
for your approval



3

Sample will be  
on your desk  
within 3 weeks



4

Production time  
is 60 days  
excluding shipment



## WARDROBE

ironing solutions  
ironing boards  
irons  
luggage racks  
accessories  
clothes hangers



A functional wardrobe is essential in every hotel room. It allows hotel guests to store their clothing and shoes, while also providing an opportunity for the hotel to offer additional services that enhance the guest experience. Our ironing solutions are specifically designed to save space and can be easily integrated into any wardrobe.



# Ironing solutions

We offer various ironing systems that include a board, an organiser, and an iron. Depending on your preferences, you can mix and match these components to create an in-room ironing solution that suits your needs. Thanks to our specially developed organisers, all sets are space-saving and user-friendly.



## WALL MOUNTED



Board and iron wall organiser. Universal solution to hang the board and the iron on the wall.

## ORGANISER AT TOP



Board and iron organiser to hang on the rod in the wardrobe, enables to use the whole board for ironing.

## ORGANISER AT BOTTOM



Board and iron organiser in one to hang on rod in wardrobe, for maximum space saving.



IRONING BOARDS

Ocean Premium

most compact ironing board

- extra compact mesh frame board, uncompromising ironing comfort
- solid matte black legs
- only 110 cm height when stored in the wardrobe
- logical unfolding / folding mechanism
- easy to use and easy to store
- available with integrated hanger/holder or separate organiser
- the additional organisers fits all Bentley irons

DIMENSIONS  
FOLDED: 40 X 8,5 X 102 CM (W X D X H)  
IRONING SURFACE: 100 X 40 CM (W X D)  
MAX. IRONING HEIGHT: 75 CM  
ITEM NUMBER  
**3546P**

ADD-ONS  
ORGANISER AT TOP (3553N)  
ORGANISER AT BOTTOM (3583)  
HOOK FLAT (3542)  
WALL-MOUNTED LASER ORGANISER (3562N)  
COVERS FOR OCEAN (DARK GREY) (3548)



HOW TO USE  
OUR OCEAN BOARD

Swirl Premium

compact ironing board

- compact mesh frame board
- fits into small areas
- adjustable in height
- extra thick matte black metal legs
- easy to use and flexible to store in the wardrobe
- cable can be connected to the board (anti-theft feature)
- available with integrated hanger/holder or separate organiser
- the additional organisers fits with all Bentley irons

DIMENSIONS  
FOLDED: 37 X 7,5 X 117 CM (W X D X H)  
IRONING SURFACE: 112 X 37 CM (W X D)  
MAX. IRONING HEIGHT: 79 CM  
ITEM NUMBER  
**3518P**

ADD-ONS  
SWIRL ORGANISER AT TOP (3556N)  
ORGANISER AT BOTTOM (3557N)  
HOOK FLAT (3534)  
WALL-MOUNTED LASER ORGANISER (3562N)  
COVERS FOR SWIRL (DARK GREY) (3501)



HOW TO USE  
OUR SWIRL BOARD

# Indigo Premium

## full-size mesh frame ironing board

- large comfortable ironing surface, full-size board
- all-round user friendly, logical unfolding/ folding mechanism
- board is adjustable in height
- solid steel matte black legs
- available with or without integrated hanger or separate organiser
- the additional organisers fits all Bentley irons

### DIMENSIONS

FOLDED: 42 X 7,5 X 134 CM (W X D X H)

IRONING SURFACE: 118 X 42 CM (W X D)

MAX. IRONING HEIGHT: 86 CM

### ITEM NUMBER

**3581P**

### ADD-ONS

INDIGO ORGANISER AT TOP (**3556-I**)

WALL-MOUNTED LASER ORGANISER (**3562N**)

COVERS FOR INDIGO (DARK GREY) (**3584**)



HOW TO USE  
OUR INDIGO BOARD



## Laser

### compact and convenient iron wall organiser

- space saving, easy to fit and easy to use for housekeeping and guests
- directly mountable on almost every screwable surface
- suitable for all Bentley & MOOR irons and ironing boards, thanks to the adjustable hooks
- can also be used as iron organiser only
- rubber inserts to prevent sliding
- made of durable and heat resistant plastic

### DIMENSIONS

14 X 2 X 21 CM (W X D X H)

### ITEM NUMBER

**3562N**

## Snake

### compact iron wall organiser

- space saving, easy to fit and easy to use
- strong horizontal bracket to store the iron
- vertical support bracket to store iron boards
- suitable for all Bentley & MOOR irons and ironing boards
- to be mounted on the wall or in the wardrobe
- including cable clip for neatly storing the cable

### DIMENSIONS

7 X 10 X 25 CM

### ITEM NUMBER

**3503** SNAKE ORGANISER  
(FOR ALL IRONS)



IRONS

Dry iron

hotel safe iron with auto shut-off  
movement sensor

- safe auto shut-off after 30 seconds when unused and horizontal (8 minutes when vertical)
- non-stick Teflon soleplate
- red 'in use' indicator light
- compact comfortable grip
- temperature adjustment switch
- easy to use and clean, no water needed

DIMENSIONS  
26,5 X 11 X 13 CM (W X D X H)  
ITEM NUMBER  
EU 3409 / UK 3411



Steam iron

hotel safe iron with powerful  
steam functions

- safe auto shut-off after 30 seconds when unused and horizontal (8 minutes when vertical)
- scratch resistant nano ceramic soleplate
- red 'in use' indicator light
- powerful steam blast & spray function (70 g/min)
- large opening, to prevent water spillage, non-drip
- convenient cable bumper

DIMENSIONS  
27 X 11,5 X 17 CM (W X D X H)  
ITEM NUMBER  
EU 3403H / UK 3402H



Steam iron retractable

hotel steam iron with retractable cord

- safe auto shut-off after 30 seconds when unused and horizontal (8 minutes when vertical)
- scratch resistant nano ceramic soleplate
- red 'in use' indicator light
- powerful steam blast & spray function (70 g/min)
- large opening, to prevent water spillage, non-drip
- convenient cable bumper

DIMENSIONS  
31 X 12 X 15 CM (W X D X H)  
ITEM NUMBER  
EU 3407 / UK 3405



Choose  
between  
three robust  
and powerfull  
irons,  
all equipped  
with a  
safe auto  
shut-off  
system,  
available  
with EU or  
UK plug



SPECIFICATIONS

# Ironing centres

| Product name   | Ocean Premium       | Swirl Premium      | Indigo Premium      |
|--|---------------------|--------------------|---------------------|
| Article number   | 3546P               | 3518P              | 3581P               |
| Frame type   | Metal mesh frame    | Metal mesh frame   | Metal mesh frame    |
| Removable cover  | (cotton dark grey)  | (cotton dark grey) | (cotton dark grey)  |
| SIZES & WEIGHT (w x d x h)   |                     |                    |                     |
| Ironing height   | 75 cm               | 79 cm              | 86 cm               |
| Adjustable height  | ●                   | ●                  | ●                   |
|  |                     |                    |                     |
| Ironing surface  | 100 x 40 cm         | 114,5 x 40 cm      | 120 x 41,5 cm       |
| Size folded  | 41 x 6,5 x 104,5 cm | 40 x 6,5 x 120 cm  | 41,5 x 8,5 x 135 cm |
| Weight   | 4 kg                | 4,2 kg             | 4,3 kg              |
| OPTIONS  |                     |                    |                     |
| Integrated organisers: (all Bentley irons fit, unless otherwise mentioned) |                     |                    |                     |
| Organiser at top   | ● (3601P)           | ● (3601P)          | ● (3601P)           |
| Organiser at bottom  | ● (3609P)           | ● (3609P)          | ● (3608P)           |
| Hook flat  | ● (3603P)           | ● (3603P)          | ● (3608P)           |
| Wall-mounted organisers:   |                     |                    |                     |
| Laser organiser  | ● (3562N)           | ● (3562N)          | ● (3562N)           |
| Snake organiser  | ● (3503)            | ● (3503)           | ● (3503)            |



LUGGAGE RACKS

Sienna I

foldable wooden luggage rack

- five strong straps to carry sufficient weight
- less damage to the walls due to the design
- space saving model without backrest
- flat when folded
- European made / FSC certified wood
- available in two colours

DIMENSIONS  
FOLDED: 60 X 11 X 80 CM (W X D X H)  
OPEN: 60 X 63 X 53 CM (W X D X H)  
ITEM NUMBERS  
4486 MAHOGANY  
4488 BLACK



On request we also customise our luggage racks to fit your specific needs.

Sienna II

foldable wooden luggage rack with backrest

- five strong straps to carry sufficient weight
- less damage to the walls due to the design
- space saving model without backrest
- flat when folded
- European made / FSC certified wood
- available in two colours

DIMENSIONS  
FOLDED: 60 X 11 X 84 CM (W X D X H)  
OPEN: 60 X 63 X 59 CM (W X D X H)  
ITEM NUMBERS  
4487 MAHOGANY  
4489 BLACK



Modena

robust foldable polished luggage rack

- strong polished stainless steel frame
- rectangular tube design
- five strong leatherette straps
- nylon seatbelt inside for maximum stability
- plastic feet cap floor protectors mounted

DIMENSIONS  
FOLDED: 52 X 9 X 76 CM (W X D X H)  
OPEN: 52 X 44 X 62 CM (W X D X H)  
ITEM NUMBER  
4508 BLACK



Lucca+

exclusive stainless steel luggage rack

- solid stainless steel frame
- backrest is free from the wall to avoid scratches
- four strong leatherette straps with nylon seatbelt
- flowing arched design
- colour adjustable on request

DIMENSIONS  
DIMENSIONS OPEN:  
50 X 15 X 75 CM (W X D X H)  
STRAP HEIGHT: 42 CM  
DIMENSIONS FOLDED:  
50 X 42 X 60 CM (W X D X H)  
ITEM NUMBERS  
4449N



ACCESSORIES

Andros

jewellery tray

- luxurious natural, brown or black colour fabric and stitching
- perfect for storing and displaying jewellery and watches
- suitable for most hotel safes
- water repellent and easy to clean

DIMENSIONS  
22 X 18 X 4 CM (W X D X H)  
ITEM NUMBERS  
6572 NATURAL  
6573 NEW CLASSIC  
6574 NOUVEAU BLACK



Flores

turndown tray

- luxurious natural, brown or black colour fabric and stitching
- perfect for storing slippers
- with functional handle
- water repellent and easy to clean

DIMENSIONS  
28 X 22 X 16 CM (W X D X H)  
ITEM NUMBERS  
6580 NATURAL  
6581 NEW CLASSIC  
6582 NOUVEAU BLACK

ALL LEATHERETTE ITEMS ARE AVAILABLE  
IN THE COLOURS NATURAL, NEW CLASSIC  
AND NOUVEAU BLACK.

Cebu

wardrobe organiser

- luxurious natural, brown or black colour fabric and stitching
- must-have in every hotel wardrobe to store your essentials
- perfect in combination with our Comino clothes brush and Falster shoe horn
- water repellent and easy to clean

DIMENSIONS  
40 X 25 X 4 CM (W X D X H)  
ITEM NUMBERS  
6566 NATURAL  
6567 NEW CLASSIC  
6568 NOUVEAU BLACK



Capri

laundry box

- luxurious natural, brown or black colour fabric and stitching
- perfect solution for storing and returning the laundry
- with compartment at top for laundry form
- water repellent and easy to clean

DIMENSIONS  
48 X 35 X 15 CM (W X D X H)  
ITEM NUMBERS  
6566 NATURAL  
6567 NEW CLASSIC  
6568 NOUVEAU BLACK





## Comino

### clothes brush

- natural, brown or black coloured fabric
- in combination with FSC certificated wood
- brush especially designed to remove dust effectively
- fits perfectly in our Cebu wardrobe organiser

DIMENSIONS  
38 X 3 X 1 CM (W X D X H)

ITEM NUMBERS  
**6557** NATURAL  
**6558** NEW CLASSIC  
**6559** NOUVEAU BLACK

## Falster

### shoe horn

- natural, brown or black coloured fabric in combination with FSC certificated wood
- long design which makes it very easy to put shoes on
- fits perfectly in our Cebu wardrobe organiser

DIMENSIONS  
38 X 3 X 1 CM (W X D X H)

ITEM NUMBERS  
**6561** NATURAL  
**6562** NEW CLASSIC  
**6563** NOUVEAU BLACK



ALL LEATHERETTE ITEMS ARE AVAILABLE  
IN THE COLOURS NATURAL, NEW CLASSIC  
AND NOUVEAU BLACK.



CLOTHES HANGERS

Edward

hanger with hook and bar

- luxury clothes hanger with modern design
- made of FSC-certified beechwood
- strong bar with anti-slip rubber
- extra width shoulders, especially designed for heavy clothing

DIMENSIONS  
45 X 4 X 29,5 CM  
(W X D X H)

ITEM NUMBERS  
6550 NATURAL  
6551 WALNUT  
6552 BLACK



Melville

hanger with hook and bar

- luxury clothes hanger with modern design
- made of FSC-certified beechwood
- strong bar with anti-slip rubber

DIMENSIONS  
44,5 X 1,4 X 23 CM  
(W X D X H)

ITEM NUMBERS  
6538 NATURAL  
6539 WALNUT  
6540 BLACK



Melville

hanger with pin and bar

- luxury clothes hanger with modern design
- and anti-theft system
- made of FSC-certified beechwood
- strong bar with anti-slip rubber

DIMENSIONS  
44,5 X 1,4 X 23 CM  
(W X D X H)

ITEM NUMBERS  
6541 NATURAL  
6542 WALNUT  
6543 BLACK



ALL CLOTHES HANGERS ITEMS  
ARE AVAILABLE IN THE COLOURS  
NATURAL, WALNUT AND BLACK

Graham

hanger with hook and clips

- luxury clothes hanger with modern design
- made of FSC-certified beechwood
- strong bar with clips

DIMENSIONS  
44,5 X 1,4 X 23 CM  
(W X D X H)

ITEM NUMBERS  
6544 NATURAL  
6545 WALNUT  
6546 BLACK



Graham

hanger with pin and clips

- luxury clothes hanger with modern design and anti-theft system
- made of FSC-certified beechwood
- strong bar with clips

DIMENSIONS  
44,5 X 1,4 X 23 CM  
(W X D X H)

ITEM NUMBERS  
6447 NATURAL  
6448 WALNUT  
6449 BLACK



Wellington

hanger

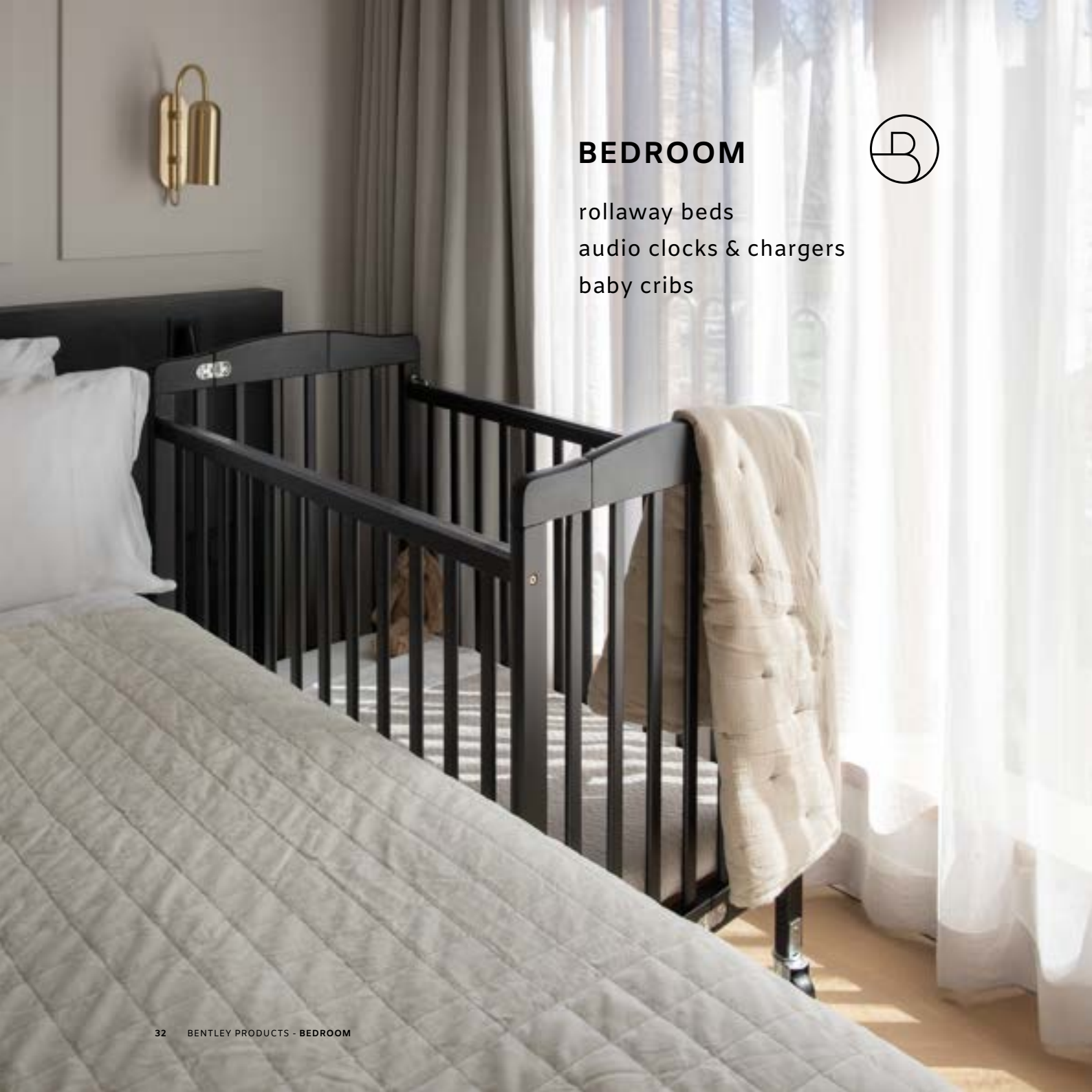
- luxury clothes hanger with modern design
- made of a combination of cotton and linen fabric
- especially designed for delicate clothing
- available in natural and black

DIMENSIONS  
38 X 3 X 14,5 CM  
(W X D X H)

ITEM NUMBERS  
6553 NATURAL  
6554 BLACK







## BEDROOM

rollaway beds  
audio clocks & chargers  
baby cribs



The hotel bedroom is the place for relaxation and comfort. We provide high-quality full-size rollaway beds and foldable baby cribs, with special attention to the quality of the mattress. Our bluetooth alarm clock with fully dimmable display and wireless charging ensures a good night's sleep and timely wake-up.



ROLLAWAY BEDS



Jade

rollaway upright extra bed

- 100% Dutch design, made in The Netherlands
- strong and durable powder coated steel frame
- space saving, because the beds are stored upright
- 4 beds on 1,5m² when stored, due to the design of headboard
- full-size bed with comfortable spring mattress 90 x 190 cm
- heavy duty wheels to prevent damage to the floor

DIMENSIONS  
FRAME 90 X 203 X 45 CM  
MATTRESS 90 X 190 X 23 CM  
ITEM NUMBERS  
4455

Jade dust cover

hygienic dust cover

- strong durable quality
- easy and quick to mount
- protects against dust and dirt
- fits perfectly around the mattress

DIMENSIONS  
FITS PERFECTLY AROUND  
THE MATTRESS OF THE  
JADE UPRIGHT BED  
ITEM NUMBERS  
4463



HOW TO USE  
OUR JADE BED



Verdi

rollaway folding extra bed

- 100% Dutch design, made in The Netherlands
- strong and durable powder coated steel frame
- largest extra bed available on the hotel market
- extra comfort & weight balance thanks to the base with 19 slats
- comfortable SG40 foam 10 cm mattress
- easy to fold and unfold due to the unique folding system
- heavy duty wheels to prevent damage to the floor

DIMENSIONS  
FOLDED 90 X 40 X 120 CM  
OPEN 90 X 210 X 45 CM  
MATTRESS 90 X 205 X 10 CM  
ITEM NUMBERS  
4440



Verdi dust cover

hygienic dust cover

- strong durable quality
- easy and quick to mount
- protects against dust and dirt
- fits perfectly around the mattress

DIMENSIONS  
FITS PERFECTLY AROUND THE VERDI  
FOLDING EXTRA BED  
ITEM NUMBERS  
4453



HOW TO USE  
OUR VERDI BED





## AUDIO CLOCKS & CHARGERS



In 2024 we will launch a renewed version of the Molto with 2 USB-C ports at the frontside.

## Molto remote

for Molto audio clock

- set the time of Molto clocks as easy as 1,2,3
  1. use the buttons to set date and time (for first use)
  2. point the remote at the clock and push button SYNC
  3. in seconds of time the correct date and time is displayed on the clock
- designed with housekeeping in mind
- ideal to change time and change from summer to wintertime and back

DIMENSIONS  
13 X 9 X 3,5 CM (W X D X H)  
ITEM NUMBER  
4710



## Molto

hotel audio speaker with qi charging, usb and bluetooth

- built-in Bluetooth wireless music player
- FM-radio (listen & alarm function)
- wireless Qi charger at the top (fast 10 W)
- USB port at the backside (1 A)
- multi-level dimmable 2,5 inch LCD screen
- backup clock memory (1x CR2032 battery, excl.)
- built-in clock, dual alarm and snooze function

DIMENSIONS  
13,8 X 13,8 X 6 CM (W X D X H)  
ITEM NUMBERS  
EU 4703 / UK 4704

## BABY CRIBS

## Limea

safe foldable wooden baby crib

- made of durable and strong hardwood
- base and mattress stored inside the crib when folded
- including 7,5 cm foam fire retardant mattress
- including dust cover for clean storage
- double width heavy duty swivel casters

DIMENSIONS  
OPEN: 101 X 67 X 102 CM (W X D X H)  
FOLDED: 101 X 24 X 102 CM (W X D X H)  
MATTRESS: 96 X 60 X 7,5 CM (W X D X H)

ITEM NUMBER  
4472 WHITE  
4465 NATURAL  
4466 MAHOGANY  
4471 BLACK



THE LIMEA BABY CRIB IS AVAILABLE IN THE COLOURS WHITE, NATURAL, MAHOGANY AND BLACK



HOW TO USE  
OUR LIMEA CRIB

## LIVING



kettles  
welcome trays  
tissue boxes  
accessories



BENTLEY PRODUCTS  
ARE CRAFTED WITH THE  
CONCEPT OF HARMONIOUS  
INTEGRATION, ENABLING  
THEM TO SEAMLESSLY  
BLEND TOGETHER.



A hotel room is more than just a place to have a good sleep; it is also your home away from home. Our wide range of living accessories makes this possible. To enjoy a good coffee or tea, we provide high-quality kettles along with practical and well-designed welcome trays and inlays in various sizes and materials. For cold drinks, we offer ice buckets and coasters for an elegant presentation. And if you happen to spill your drink, there's no need to worry because our tissue boxes are always within reach.



KETTLES



Halo

0,6 litre compact double wall kettle

- 1000-1200 W (220-240V, 50/60 Hz)
- double wall, stainless steel inside
- auto steam shut-off, boil dry protection
- blue LED indicator light around the body
- matt black

DIMENSIONS  
TOP DIAMETER Ø 12 CM  
SIZE OF BASE Ø 12,4 CM  
OVERALL HEIGHT 17 CM  
ITEM NUMBERS  
EU 4243 / UK 4244

Halo

0,8 litre compact stainless steel kettle

- 1000-1200 W (220-240V, 50/60 Hz)
- stainless steel body
- auto steam shut-off, boil dry protection
- blue LED indicator light around the body

DIMENSIONS  
TOP DIAMETER Ø 12 CM  
SIZE OF BASE Ø 12,4 CM  
OVERALL HEIGHT 17 CM  
ITEM NUMBERS  
EU 4250 / UK 4251



extra large opening lid



Saffron view

brushed stainless steel or matt black kettle 1 litre

- concealed heating element, easy to clean
- auto steam shut-off, boil dry protection
- red 'in use' indicator light in the handle
- water level indicator / water filter in spout
- 360° rotatable, Strix controller
- luxury brushed stainless steel or matt black finish

DIMENSIONS  
TOP DIAMETER Ø 9 CM  
SIZE OF BASE Ø 14,5 CM  
OVERALL HEIGHT 21,5 CM  
ITEM NUMBERS  
EU 4069 / UK 4067 STAINLESS STEEL  
EU 4260 / UK 4261 MATT BLACK

Coral

compact kettle 0,5 litre

- 0,5 litre capacity, 800 W
- concealed heating element, easy to clean
- auto steam shut-off, boil dry protection
- red 'in use' indicator light in the handle
- water filter in spout
- 360° rotatable, Strix controller
- brushed stainless steel or matt black design

DIMENSIONS  
TOP DIAMETER Ø 8 CM  
SIZE OF BASE Ø 14 CM  
OVERALL HEIGHT 19 CM  
ITEM NUMBER  
EU 4086 / UK 4087  
STAINLESS STEEL  
EU 4146 / UK 4147  
MATT BLACK





Make your  
welcome  
tray setting  
complete  
by adding  
a set of our  
high-quality  
mugs

# Xanthic mug

## strong stoneware mug

- strong quality stoneware
- food and dishwasher safe
- luxury black outside and white inside
- 150 ml capacity

DIMENSIONS  
WATER CAPACITY 150 ML  
WEIGHT 170 GR  
Ø 7 CM DIAMETER  
9 CM HEIGHT  
ITEM NUMBER  
**4080N**



# Canella mug

## luxurious compact mug

- made of strong melamine
- food and dishwasher safe
- luxury black colour
- fits neatly with the Canella tray
- 150 ml capacity

DIMENSIONS  
Ø 7 CM DIAMETER  
9 CM HEIGHT  
WATER CAPACITY 150 ML  
WEIGHT 100 GR  
ITEM NUMBER  
**4161N**



## WELCOME TRAYS

# Xanthic small

## Dutch designed stylish wooden welcome tray

- compact welcome tray made of beech wood
- anti-theft: cable can be fixed to the base of the tray
- integrated space for the kettle base
- 2 indentations for sachets and spoons
- easy to clean due to rounded corners
- strong lacquer to minimize scratches and stains

DIMENSIONS  
42 X 20 X 4 CM (W X D X H)  
OVERALL HEIGHT WITH CORAL KETTLE: 22 CM  
ITEM NUMBER  
**4115P MAHOGANY**  
**4150P BLACK**



# Xanthic

## Dutch designed stylish wooden welcome tray

- made of durable beech wood
- anti-theft: cable can be fixed to the base of the tray
- integrated space for the kettle base
- 4 indentations for sachets and spoons
- easy to clean due to rounded corners
- strong lacquer to minimize scratches and stains

DIMENSIONS  
50 X 20 X 4 CM (W X D X H)  
OVERALL HEIGHT:  
INCL. SAFFRON VIEW  
KETTLE: 24,5 CM  
OVERALL HEIGHT:  
INCL. CORAL KETTLE: 22 CM

ITEM NUMBER  
**4072P MAHOGANY**  
**4085P BLACK**

# Xanthic coffee & tea

Dutch designed stylish wooden  
welcome tray

- large welcome tray made of beech wood
- anti-theft: cable can be fixed to the base of the tray
- integrated space for the kettle base
- Dutch design with straight corners
- 3 recesses for sachets and spoons
- 6 recesses for Nespresso® cups
- strong lacquer to minimize scratches and stains

DIMENSIONS  
42 X 31,5 X 4 CM (W X D X H)  
OVERALL HEIGHT WITH  
CRIMSON KETTLE: 22 CM

ITEM NUMBERS  
**4135P** MAHOGANY  
**4152** BLACK

Our welcome trays are  
available in various sizes and colours.  
On request we also customise our  
trays to fit your specific needs.



# Orange

compact dutch-designed  
wooden welcome tray

- anti-theft: cable can be fixed to the base of the tray
- integrated space for the kettle base
- 4 recesses for sachets and spoons
- easy to clean due to the rounded corners
- strong lacquer to minimize scratches and stains
- available in stylish black, made of beech wood

DIMENSIONS  
24 X 24 X 4 CM (W X D X H)  
OVERALL HEIGHT WITH  
CORAL KETTLE: 22 CM

ITEM NUMBER  
**4215N**



# Canella

wooden welcome tray  
in mahogany and black

- space-saving beech wood welcome tray
- hygienic consumables drawer
- three compartments for ingredients
- drawer and cups made from food-safe melamine
- anti-theft: cable can be fixed to the base of the tray

DIMENSIONS  
25 X 17 X 5 CM (W X D X H)  
OVERALL HEIGHT WITH HALO KETTLE: 22 CM

ITEM NUMBER  
**4160** MAHOGANY  
**4595** BLACK



SPECIFICATIONS

# Welcome trays

| Product name                                    | Canella          | Orange         |
|---|------------------|----------------|
| Article number                                  | 4160             | 4215           |
| Size of the tray (w x d x h)                    | 25 x 17 x 5 cm   | 24 x 24 x 4 cm |
| Integrated kettle base                          |                  | ●              |
| Indentions                                      | 3                | 1 + 3          |
| Space for coffee machine                        | -                | -              |
| Space for cups /mugs                            | ●                | ●              |
| Anti-theft cable fixture                        | ●                | ●              |
| Certifications                                  | FSC®             | FSC®           |
| Material  | Beech / Melamine | Beech wood     |
| Available colours<br>(Other colours on request) | Mahogany / Black | Black          |
| Bespoke possibilities                           | ●                | ●              |
| KETTLE OPTIONS:                                 |                  |                |
| Halo all versions                               | ●                | ●              |
| Coral all versions                              | ●                | ●              |
| Saffron view EU 4069 - UK 4067                  | ●                | ●              |

For more technical details view our technical product sheets.  
Download these via [www.bentleyeurope.com](http://www.bentleyeurope.com) or contact us.

| Product name                                    | Xanthic small    | Xanthic          | Xanthic Coffee&Tea |
|---|------------------|------------------|--------------------|
| Article number                                  | 4115P            | 4072P            | 4135P              |
| Size of the tray (w x d h)                      | 42 x 20 x 4 cm   | 50 x 20 x 4 cm   | 42 x 31,5 x 4 cm   |
| Integrated kettle base                          | ●                | ●                | ●                  |
| Indentions                                      | 2                | 4                | 3 + 6              |
| Space for coffee machine                        | -                | -                | ●                  |
| Space for cups /mug                             | ●                | ●                | ●                  |
| Anti-theft cable fixture                        | ●                | ●                | ●                  |
| Certifications                                  | FSC®             | FSC®             | FSC®               |
| Material  | Beech wood       | Beech wood       | Beech wood         |
| Available colours<br>(Other colours on request) | Mahogany / Black | Mahogany / Black | Mahogany / Black   |
| Bespoke possibilities                           | ●                | ●                | ●                  |
| KETTLE OPTIONS:                                 |                  |                  |                    |
| Halo all versions                               | ●                | ●                | ●                  |
| Coral all versions                              | ●                | ●                | ●                  |
| Saffron view EU 4069 - UK 4067                  | ●                | ●                | ●                  |



## Fuji

### welcome tray square

- luxurious classic brown or natural sand colour fabric and stitching
- elegant square design
- multi-functional tray for presenting coffee and tea equipment
- including 2 cable cut-outs for kettle or coffee machine
- water repellent and easy to clean

DIMENSIONS  
38 X 38 X 3 CM (W X D X H)

ITEM NUMBERS  
**6213** NATURAL  
**6210** NEW CLASSIC  
**6502** NOUVEAU BLACK



## Etna

### welcome tray rectangular

- luxurious classic brown or natural sand colour fabric and stitching
- elegant rectangular design
- ideal for presenting kettle and coffee and tea mugs and utensils
- including 2 cable cut-outs for kettle
- water repellent and easy to clean

DIMENSIONS  
38 X 21 X 3 CM (W X D X H)

ITEM NUMBERS  
**6214** NATURAL  
**6211** NEW CLASSIC  
**6503** NOUVEAU BLACK



ALL LEATHERETTE ITEMS ARE AVAILABLE  
IN THE COLOURS NATURAL, NEW CLASSIC  
AND NOUVEAU BLACK.



## Stromboli

### welcome tray with drawer

- luxurious classic brown or natural sand colour fabric and stitching
- elegant and functional rectangular design
- including 2 cable cut-outs for kettle and coffee machine
- suitable to place capsule machine and kettle
- multi purpose drawer to store capsules, teabags and amenities

DIMENSIONS  
31 X 38 X 8 CM (W X D X H)

ITEM NUMBER  
**6229** NATURAL  
**6228** NEW CLASSIC  
**6505** NOUVEAU BLACK



## Maroa

### welcome tray round

- luxurious classic brown or natural sand colour fabric and stitching
- unique round design
- ideal for presenting kettle and coffee and tea mugs and utensils
- including cable cut-out for kettle or coffee machine
- water repellent and easy to clean

DIMENSIONS  
38 X 38 X 3 CM (W X D X H)

ITEM NUMBER  
**6215** NATURAL  
**6212** NEW CLASSIC  
**6504** NOUVEAU BLACK

ACCESSORIES

Ipala

amenity tray rectangular

- elegant design
- 3 compartments to store capsules, teabags and sticks
- perfect for mix and match
- compact size
- made from high quality resin; water repellent and easy to clean

DIMENSIONS  
19,5 X 9 X 3 (W X D X H)  
ITEM NUMBER  
**6301** WHITE MARBLE  
**6304B** BLACK



Ibu S

amenity tray round

- unique round design
- ideal for presenting coffee and tea supplies
- perfect for mix and match
- made from high quality resin; water repellent and easy to clean

DIMENSIONS  
13 X 13 X 3 (W X D X H)  
ITEM NUMBER  
**6302** WHITE MARBLE  
**6303B** BLACK



Bromo

condiment box

- luxurious classic brown or natural sand colour fabric and stitching
- 3 compartments to store capsules, teabags and sticks
- removable capsules divider
- functional with an elegant look
- water repellent and easy to clean

DIMENSIONS  
19 X 11,5 X 3 (W X D X H)  
ITEM NUMBER  
**6239** NATURAL  
**6238** NEW CLASSIC  
**6509** NOUVEAU BLACK



Yasur

classic condiment box with lid

- luxurious classic brown or natural sand colour fabric and stitching
- removable divider for 6 capsules
- perfect to show and store your coffee supplies
- water repellent and easy to clean

DIMENSIONS  
17 X 17,5 X 5,5 (W X D X H)  
ITEM NUMBER  
**6241** NATURAL  
**6240** NEW CLASSIC  
**6513** NOUVEAU BLACK



ALL LEATHERETTE ITEMS ARE AVAILABLE IN THE COLOURS NATURAL, NEW CLASSIC AND NOUVEAU BLACK.

# Cres

## coaster tray

- luxurious natural, brown or black colour fabric and stitching
- suitable for any type of glass and bottle
- perfect for meeting rooms
- water repellent and easy to clean

### DIMENSIONS

24 X 12 X 5 CM (W X D X H)

### ITEM NUMBERS

**6675** NATURAL

**6676** NEW CLASSIC

**6677** NOUVEAU BLACK

# Utila

## coaster

- luxurious classic brown or natural sand colour fabric and stitching
- suitable for any type of glass or cup
- to protect the service of trays and tables
- diameter 100 mm, Thickness 5 mm
- water repellent and easy to clean

### DIMENSIONS

10 X 10 X 0,5 CM (W X D X H)

### ITEM NUMBER

**6227** NATURAL

**6226** NEW CLASSIC

**6512** NOUVEAU BLACK



ALL LEATHERETTE ITEMS ARE AVAILABLE  
IN THE COLOURS NATURAL, NEW CLASSIC  
AND NOUVEAU BLACK.

# Pacaya

## classic ice bucket

- luxurious classic brown or natural sand colour fabric and stitching
- perfect combination of stainless steel and high quality leatherette
- double walled bucket; keeps your ice cubes frozen
- including ice cube tong
- water repellent and easy to clean

### DIMENSIONS

13,5 X 13,5 X 15,5 (W X D X H)

### ITEM NUMBER

**6237** NATURAL

**6236** NEW CLASSIC

**6510** NOUVEAU BLACK



The double wall  
makes sure the ice  
cubes stay frozen for  
a long time



TISSUE BOXES

Kaba

tissue box rectangular

- luxurious classic brown or natural sand colour fabric and stitching
- suitable for most rectangular tissueboxes
- magnetic closing lid on the bottom
- ellipse opening
- water repellent and easy to clean

DIMENSIONS

25 X 13,5 X 8,5 CM (W X D X H)

ITEM NUMBER

6211 NATURAL

6220 NEW CLASSIC

6515 NOUVEAU BLACK



Manam

tissue box square

- luxurious classic brown or natural sand colour fabric and stitching
- suitable for most square tissueboxes
- magnetic closing lid on the bottom
- ellipse opening
- water repellent and easy to clean

DIMENSIONS

13,5 X 13,5 X 14 CM (W X D X H)

ITEM NUMBER

6223 NATURAL

6222 NEW CLASSIC

6516 NOUVEAU BLACK

ALL LEATHERETTE ITEMS ARE AVAILABLE  
IN THE COLOURS NATURAL, NEW CLASSIC  
AND NOUVEAU BLACK.





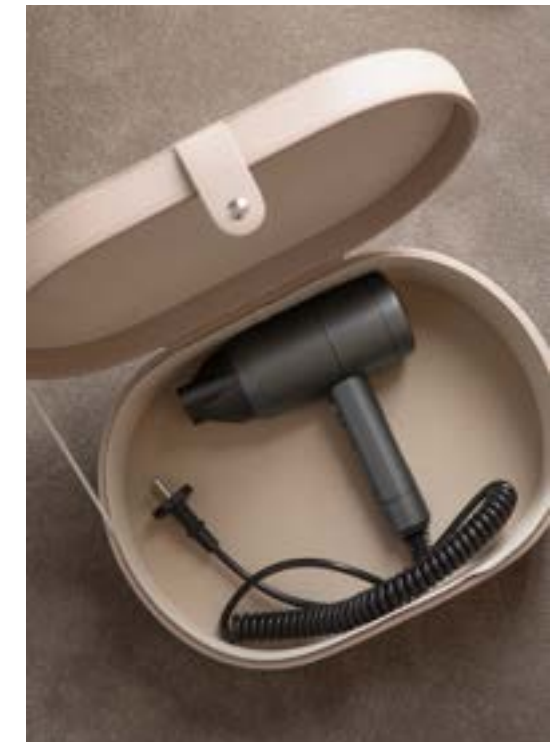
## BATHROOM



accessories  
scales  
hair dryers



The bathroom is the place for personal care. By combining style and unique functionality in our bathroom products, we enhance the personal care experience. An example is the retractable cord on our hair dryers. Our Cindy scales are battery-free, which is practical and environmentally friendly.



BATHROOM ACCESSORIES

Azul

amenity tray S

- unique rounded design, available in white marble and black
- perfect for organizing amenities
- part of our Mix & Match collection, create the best suitable set for your bathroom
- made from high quality resin; water repellent and easy to clean

DIMENSIONS  
20 X 10 X 2,5 CM (W X D X H)  
ITEM NUMBERS  
6306 WHITE MARBLE  
6307 BLACK



Azul

amenity tray M

- unique oval design, available in white marble and black
- perfect for organizing amenities
- part of our Mix & Match collection, create the best suitable set for your bathroom
- made from high quality resin; water repellent and easy to clean

DIMENSIONS  
25 X 12 X 2,5 CM (W X D X H)  
ITEM NUMBERS  
6310 WHITE MARBLE  
6311 BLACK

Monti

amenity tray

- unique rounded design, available in white marble and black
- with small feet, very functional in wet spaces
- perfect for organizing amenities
- part of our Mix & Match collection, create the best suitable set for your bathroom
- made from high quality resin; water repellent and easy to clean

DIMENSIONS  
30 X 12 X 5 CM (W X D X H)  
ITEM NUMBERS  
6322 WHITE MARBLE  
6323 BLACK



Toba

amenity jar

- unique round design with lid, available in white marble and black
- perfect for organizing small amenities
- part of our Mix & Match collection, create the best suitable set for your bathroom
- made from high quality resin; water repellent and easy to clean

DIMENSIONS  
11 X 11 X 7,5 CM (W X D X H)  
ITEM NUMBERS  
6324 WHITE MARBLE  
6325 BLACK



## Baker

### tissue box

- completes your bathroom set, available in white marble and black
- suitable for most square tissueboxes
- part of our mix and match bathroom collection
- made from high quality resin; water repellent and easy to clean

DIMENSIONS  
14 X 13,5 X 13,5 CM (W X D X H)

ITEM NUMBERS  
**6326** WHITE MARBLE  
**6327** BLACK



## Ibu M

### amenity tray

- unique round design, available in white marble and black
- perfect for organizing amenities
- part of our Mix & Match collection, create the best suitable set for your bathroom
- made from high quality resin; water repellent and easy to clean

DIMENSIONS  
23 X 23 X 3 CM (W X D X H)

ITEM NUMBERS  
**6324** WHITE MARBLE  
**6325** BLACK

## Parker

### mirror

- luxury standing mirror
- with marble feet, available in white and black
- 2-sided mirror with 3x magnification
- essential, final touch for your bathroom

DIMENSIONS  
36 X 20 X 7 CM (W X D X H)

ITEM NUMBERS  
**6333** WHITE MARBLE  
**6332** BLACK







## Bahia

### amenity box

- luxurious natural, brown or black colour fabric and stitching
- perfect storage box for all kinds of amenities
- distinctive rounded design with removable divider
- water repellent and easy to clean

#### DIMENSIONS

20 X 11 X 10 CM (W X D X H)

#### ITEM NUMBERS

**6583** NATURAL  
**6584** NEW CLASSIC  
**6585** NOUVEAU BLACK

ALL LEATHERETTE ITEMS ARE AVAILABLE  
 IN THE COLOURS NATURAL, NEW CLASSIC  
 AND NOUVEAU BLACK.



## Nevis

### hair dryer box

- luxurious natural, brown or black colour fabric and stitching
- suitable for every Bentley hair dryer
- specially designed to store the hair dryer safe and neatly
- water repellent and easy to clean

#### DIMENSIONS

35 X 25 X 12 CM (W X D X H)

#### ITEM NUMBERS

**6569** NATURAL  
**6570** NEW CLASSIC  
**6571** NOUVEAU BLACK



## SCALES

## Naomi

### scale with less slippery surface

- less slippery surface when wet
- auto-on when you step on it
- equipped with high precision strain gauge sensors system
- battery cover with screw
- rounded edges on all sides
- minimum step-up height
- low battery indicator

#### DIMENSIONS

30 X 30 X 1,5 CM (W X D X H)

#### ITEM NUMBER

**4499**



## Cindy+

### battery-free hotel scale

- environmental friendly due to battery-free function
- tap the button to generate power
- time-saving solution for housekeeping
- four high-precision sensors
- equipped with 6 mm safety glass
- select kg or lb
- max capacity 180 kg / 397 lb

#### DIMENSIONS

28 X 28 X 2,8 CM (W X D X H)

#### ITEM NUMBERS

**4533N** WHITE  
**4534N** BLACK



HAIR DRYERS



Sirocco

hotel hair dryer with retractable cord

- safe 1750 – 2100 w hotel hair dryer with overheating protection
- strong retractable cord mechanism (185 cm cable)
- permanent ionisation function, protects and volumes the hair
- space saving, easy to store
- cold air button
- two air speed settings / three temperature settings
- removable nozzle and air intake cap, for easy cleaning
- durable and strong matte finish

DIMENSIONS  
22 X 8,5 X 22 CM (W X D X H)  
(EXCL. NOZZLE)  
ITEM NUMBERS  
EU 6060N-I / UK 6061N-I



Levante

hotel hair dryer with foldable grip and retractable cord

- safe 1750 – 2100 W hotel hair dryer with overheating protection
- robust retractable cord mechanism (160 cm)
- permanent ionisation function, protects and volumes the hair
- three temperature / heat settings and cold air button
- removable nozzle and air intake cap
- durable and strong matte black finish

DIMENSIONS  
27,5 X 9,5 X 28,5 CM (W X D X H) (INCL. NOZZLE)  
FOLDED 21,5 X 9,5 X 15 CM (W X D X H) (EXCL. NOZZLE)  
ITEM NUMBERS  
EU 6065 / UK 6066

space saving folding mechanism



Calima

hotel hair dryer

- overheating protection
- robust spiral cord
- slim styling nozzle for precise styling
- removable nozzle and filter cover
- ionisation function
- safe power 1600 - 1800 W

DIMENSIONS  
20 X 8,5 X 26 CM (W X D X H)  
ITEM NUMBER  
EU 6078 / UK 6079

Vane

wall holder hair dryer anti-theft

- made of strong black powder coated aluminium
- including anti-theft wire-hook
- rubber handle to protect hair dryers
- comes with 2 black screws
- suitable for all Bentley and MOOR hair dryers

DIMENSIONS  
8,1 X 9,5 X 7,2 CM  
(W X D X H)  
ITEM NUMBER  
6077



Hair dryer bag

cotton bag, suitable for all our hair dryer models

- luxurious, strong quality
- protects the hair dryer while not in use
- fits all Bentley hair dryers
- two drawstrings to close the bag properly

DIMENSIONS  
32,5 X 32,5 CM (W X D)  
ITEM NUMBER  
6062N



## DESK

accessories  
note pads  
waste bins



Productivity and organization are key in the desk area. We offer desk pads, guest directories, and waste bins to provide a comfortable workspace for business travelers and to offer additional information for leisure travelers.



ACCESSORIES

Vesuvius

desk pad

- luxurious classic brown or natural sand colour fabric and stitching
- including leatherette strap and messing screws
- helps to present stationary items in a proper way
- water repellent and easy to clean

DIMENSIONS

50 X 38 X 0,5 CM (W X D X H)

ITEM NUMBERS

6218 NEW CLASSIC

6219 NATURAL



Krakatoa

guest directory

- luxurious classic brown or natural sand colour fabric and stitching
- suitable for A4 size paper
- including leatherette strap and 2 messing screws to fix the paper
- special designed 'corded-closing' mechanism
- water repellent and easy to clean

DIMENSIONS

35 X 25 X 4 CM (W X D X H)

ITEM NUMBERS

6216 NEW CLASSIC

6217 NATURAL

ALL LEATHERETTE ITEMS ARE AVAILABLE IN THE COLOURS NATURAL, NEW CLASSIC AND NOUVEAU BLACK.



Augustine

note pad holder

- luxurious classic brown or natural sand colour fabric and stitching
- suitable for A6 size paper
- easy-fix system for notepad and pen
- water repellent and easy to clean

DIMENSIONS

16 X 17 X 0,5 (W X D X H)

ITEM NUMBER

6234 NEW CLASSIC

6235 NATURAL

Sindara

remote control holder

- luxurious classic brown or natural sand colour fabric and stitching
- unique and stylish design to present remote
- inner size 203 x 15 x 65 mm (w x h x d)
- 2-flap construction with leatherette belt
- water repellent and easy to clean

DIMENSIONS

24 X 8 X 4 CM (W X D X H)

ITEM NUMBER

6224 NEW CLASSIC

6225 NATURAL





WASTE BINS

Butak

10 l double wall waste bin

- luxurious classic brown or natural sand colour fabric and stitching
- double wall bin for hygienic storage bag
- chrome ring on top
- rubber floor protector ring at the bottom
- water repellent and easy to clean

DIMENSIONS  
23 X 23 X 27 CM (W X D X H)  
ITEM NUMBER  
6231 NATURAL  
6230 NEW CLASSIC  
6514 NOUVEAU BLACK



Butak inlay

inlay bin for waste separation

- inlay fits in every Butak bin
- made out of recycled plastic
- a capacity of 6 liters
- easy to add
- water repellent and easy to clean

DIMENSIONS  
26 X 23 X 11,5 CM  
(W X D X H)  
ITEM NUMBER  
6305



Palma

bin with waste separation

- luxurious black or classic brown colour fabric and stitching
- with 2 compartments for waste separation, each 6 liters
- functional with an elegant look
- water repellent and easy to clean

DIMENSIONS  
23 X 23 X 30 (W X D X H)  
ITEM NUMBER  
6533 NATURAL  
6233 NEW CLASSIC  
6232 BLACK



ALL LEATHERETTE ITEMS ARE AVAILABLE  
IN THE COLOURS NATURAL, NEW CLASSIC  
AND NOUVEAU BLACK.





## COLLECTIONS



Natural



New Classic



Nouveau Black



Mix & Match



Four inspiring collections that give you the opportunity to complement the room in just the right way. Add your personal touch, choose for the Natural, New Classic, Nouveau Black or the Mix & Match collection and create a unique atmosphere.

## THE STORY

# NATURAL COLLECTION

The Natural collection is crafted for mindful and conscious leisure travelers. The use of natural light colors and organic design elements makes this collection a perfect fit for beach resorts and nature-themed boutique hotels. The items in this collection contribute to a sense of comfort and relaxation, enhancing the experience of a well-deserved holiday.

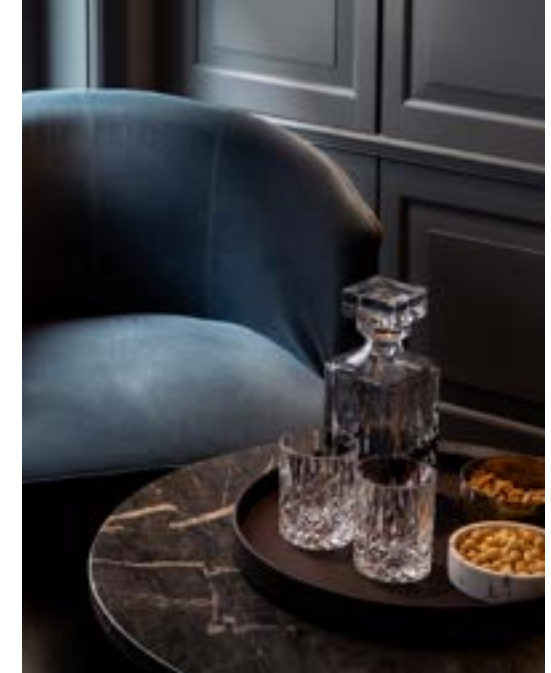




## THE STORY

## NEW CLASSIC COLLECTION

The New Classic collection also caters to the business guest with an authentic taste and an eye for detail. Its luxurious and classic design, coupled with the use of refined materials, aims to provide the established business traveler with a home-away-from-home experience. The items in this collection are functional and user-friendly, enhancing the overall comfort of the stay.



THE STORY

NOUVEAU BLACK COLLECTION

The Nouveau Black collection is designed for the business guest with an authentic taste and an eye for detail. Its luxurious and classic design, along with the use of refined materials, creates an ambiance that makes the seasoned business traveler feel at home. The items are functional and easy to use, ensuring a comfortable stay.





## MIX & MATCH COLLECTION

The elements within our collections are designed to be mixed and matched, allowing you to create unique combinations that suit the specific design of your hotel room. We encourage you to explore your creativity and create your own look and feel by combining our items in a way that best suits your preferences.



we think of ——— everything

**Bentley**



**Bentley Europe BV**

Ravenoord 235  
3523 DB Utrecht  
The Netherlands

info@bentleyeurope.com  
www.bentleyeurope.com  
+31 85 006 9026

